

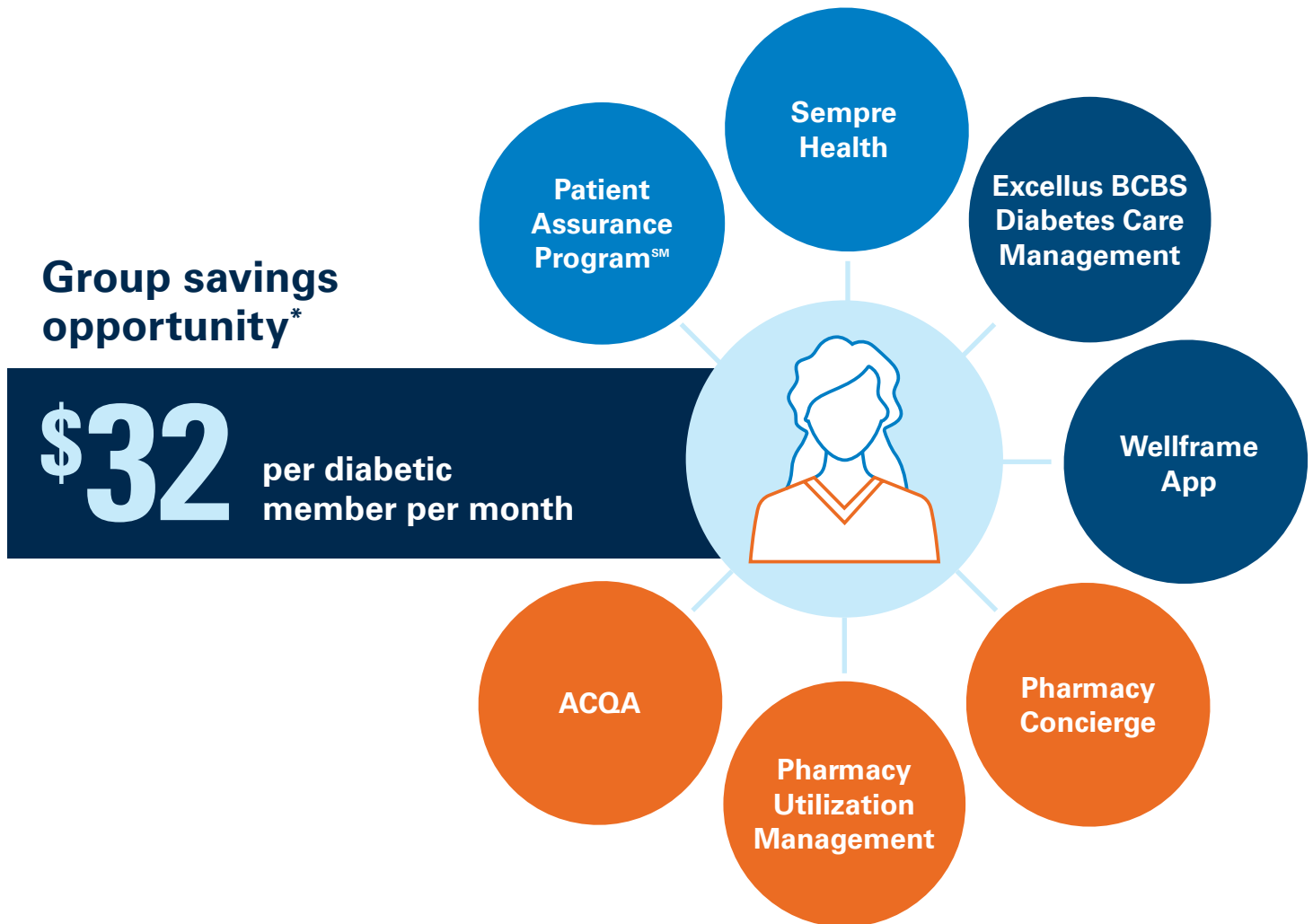


Integrated Medical & Pharmacy Diabetes Programs

Lowering costs and protecting employees with diabetes

Excellus 
Everybody Benefits

Our model is built to bring all your benefits together, providing an integrated and holistic approach to health care by leveraging medical and pharmacy data. When medical and pharmacy teams are working collaboratively, it's proven that the best care, while driving towards the lowest cost can be delivered.



● Average business savings*

Pharmacy Concierge: **\$16.74** per diabetic member per month

ACQA: **\$6.69** per diabetic member per month

Pharmacy UM: **\$8.81** per diabetic member per month

● Supportive care**

Average cost avoidance: **\$362** per engaged member per month

- 45%** decrease in emergency department visits
- 54%** decrease in inpatient admits
- 65%** decrease in preventable admits

● Average member savings*

Patient Assurance Program: **\$124** per diabetic member per year

Sempre Health: **\$230** per member per year

* Health Plan Commercial Rx Book of Business (BoB) Data, these are averages based on BoB data and are not guarantees.

**Outcomes data above is based on full year 2022 claims experience for members engaged in Care Management / Disease Management with a primary diagnosis of diabetes, using a pre/post methodology.

With our integrated medical and pharmacy¹ coverage we offer the following diabetes support to you and your team:



ACQA

An Accountable Cost & Quality Agreement (ACQA), is our approach to value-based payment agreements, where we collaborate with our ACQA physicians by providing them data and tools they need to better care for patients.



Sempre Health³

An SMS text-based program that addresses prescription affordability and increases adherence for eligible members. The program provides a member copay incentive for filling their medication on time, each month.



Pharmacy Concierge²

A retrospective utilization management support program that identifies and provides voluntary insights to providers.



Patient Assurance ProgramSM

Members will pay no more than \$25 per 30 days for eligible drugs. Up to \$50 is provided by manufacturer assistance and in some instances a discount by the health plan.



Utilization Management

Formulary strategies driving to high clinical value and lowest net cost medications. These management programs include Prior Authorization, Step Therapy and Quantity Limits.



Over the last few years, market and social events have led to increased costs and **use of GLP-1 medications such as Ozempic®, or Mounjaro®**. Excellus BlueCross BlueShield (BCBS) has kept pace with these events and is ensuring appropriate use with our Utilization Management programs.

Currently we are saving businesses an average of \$2.66 PMPM* through GLP-1 Utilization Management.



Excellus BCBS Diabetes Care Management Team

Our on-staff team coordinates with one another – and our provider network – to deliver support and guidance to employees.



Wellframe® App

A mobile app that puts answers, tools, educational materials and more at your employees' fingertips.

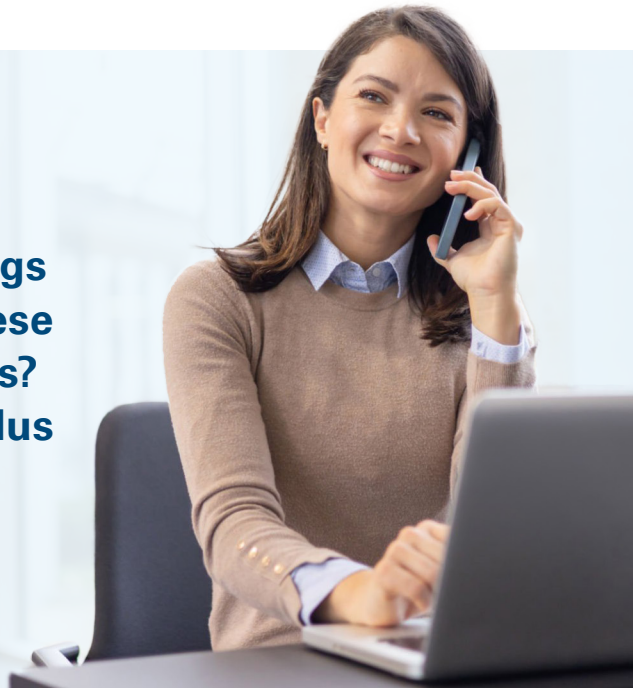
¹ Program eligibility, election process and shared savings fee may vary by funding arrangement.

² A buy-up for self-funded, minimum premium, and article 47 groups.

³ Self-funded, minimum premium, article 47 groups must enroll in Pharmacy Concierge to be eligible.



**Have questions around savings
your team could see with these
integrated diabetes programs?
Contact your broker or Excellus
BCBS account manager.**



Excellus BlueCross BlueShield has contracted with Sempre Health, an independent company, to provide select discounted prescription copays to Excellus BCBS members. Wellframe is an independent company that provides a health and wellness support mobile app to Excellus BCBS members. Copyright © 2024, Excellus BlueCross BlueShield, a nonprofit independent licensee of the Blue Cross Blue Shield Association. All rights reserved.

B-8651 rev 01.25 / 19915-24Rx